



Sandhill Close, Bradford, West Yorkshire BD8 0DZ
£725 PCM

This is a ground bedroom floor apartment in the popular Rhodesway area. The property comprises of an entrance hallway with storage cupboards, spacious lounge with Juliette balcony, fully fitted modern kitchen with electric oven and gas hob, fridge, freezer and washing machine. One double bedroom with en suite and a second bedroom. Bathroom with white three piece suite. Central heating and double glazing. Private parking and communal gardens. Part Furnished.

Available from 10th August 2026

Locate
 The Property Experts

Locate Properties UK LTD 29-31 North Parade, Bradford, West Yorkshire, BD1 3JL			www.locatehomes.co.uk
t. +44 (0) 01274 720 900	 @locatehomesbfd		e. info@locatehomes.co.uk

ENTRANCE/VESTIBULE



BEDROOM ONE



LOUNGE



EN-SUITE



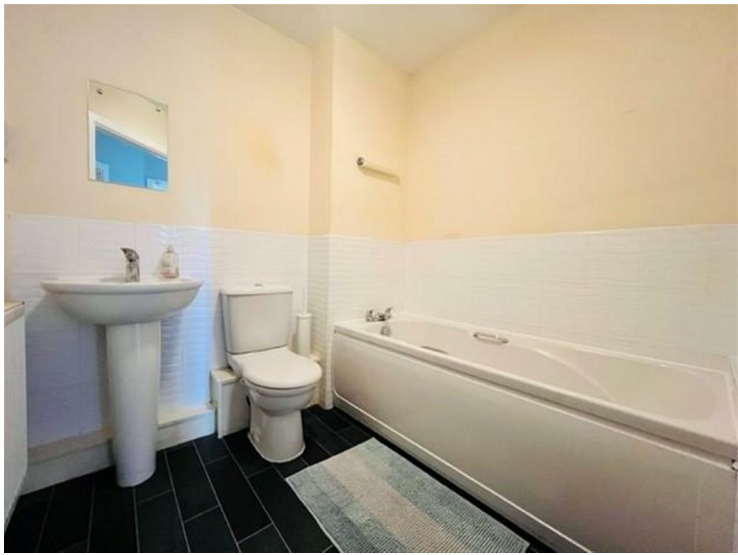
KITCHEN

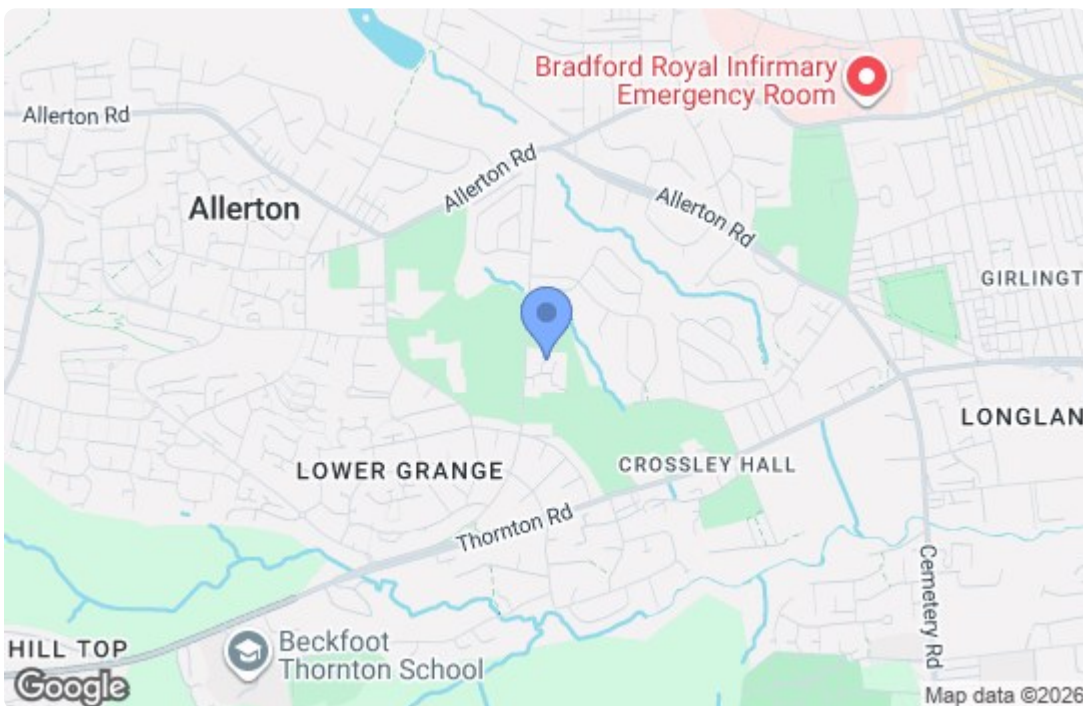


BEDROOM TWO



BATHROOM





Energy Efficiency Rating		Current	Potential
Very energy efficient - lower running costs			
(92 plus) A			
(81-91) B		82	83
(69-80) C			
(55-68) D			
(39-54) E			
(21-38) F			
(1-20) G			
Not energy efficient - higher running costs			
England & Wales		EU Directive 2002/91/EC	
Environmental Impact (CO ₂) Rating		Current	Potential
Very environmentally friendly - lower CO ₂ emissions			
(92 plus) A			
(81-91) B		81	81
(69-80) C			
(55-68) D			
(39-54) E			
(21-38) F			
(1-20) G			
Not environmentally friendly - higher CO ₂ emissions			
England & Wales		EU Directive 2002/91/EC	